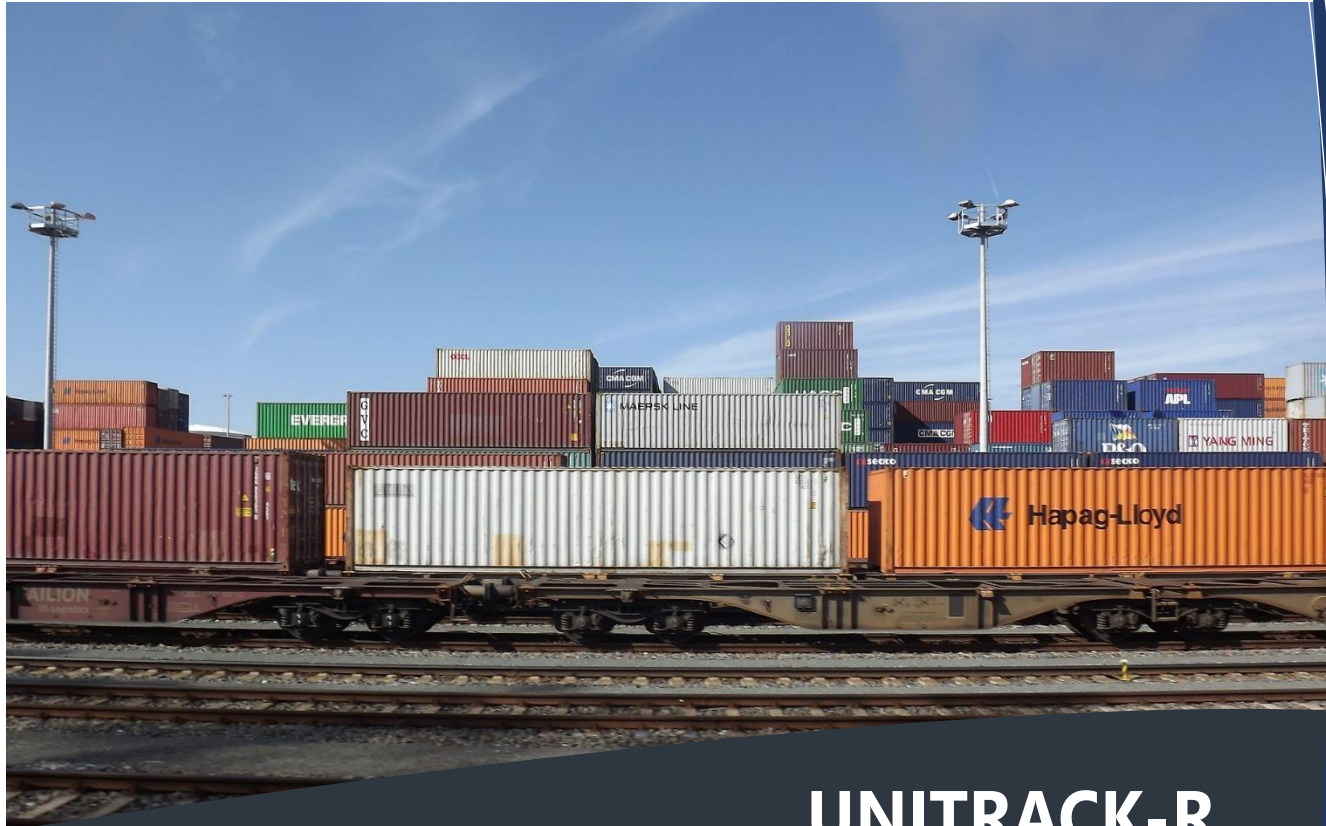




Custom software development for inter-modal, logistics, warehousing, ports and airports



UNITRACK-R

Railport Management

UK and Europe Tel: +44 1942 209578
Caribbean & USA Tel: +1 758 7214487



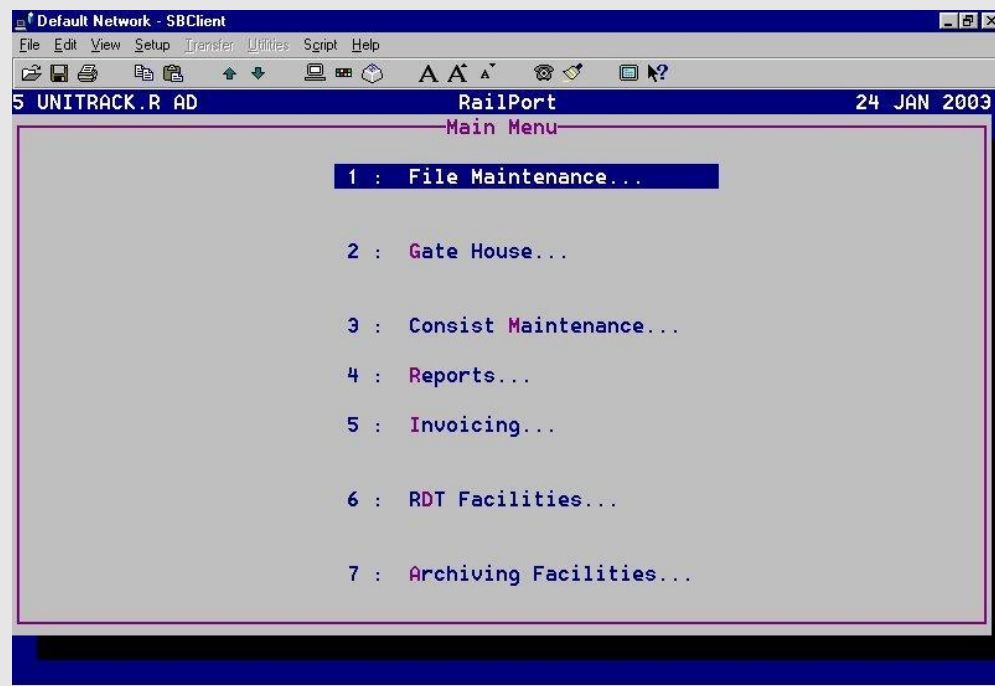
UNITRACK-R IS A HIGHLY SOPHISTICATED SYSTEM SPECIFICALLY DESIGNED FOR THE CONTROL OF CONTAINERS, VEHICLES, GENERAL AND BULK CARGOES IN RAILHEADS AND TERMINALS, INLAND CLEARANCE DEPOTS AND M&R DEPOTS AND FOR OWNED CONTAINER FLEETS.

UNITRACK-R offers your operation a host of benefits...

- MANAGE AND TRACK ALL CONTAINERS WITHIN A RAILHEAD FACILITY
- TRANSACTIONS ARE SECURE AS USERS ARE REQUIRED TO ENTER UNIQUE IDS AND PASSWORDS
- SECURE INTERNET ACCESS TO YOUR SYSTEM CAN BE PROVIDED TO ALLOW CUSTOMER ACCESS AT ANY TIME
- COST REDUCTIONS THROUGH A MODULAR SOLUTION TAILORED TO YOUR NEEDS
- ALL INFORMATIONAL NEEDS OF OPERATIONAL AND ADMINISTRATIVE STAFF
- SPEEDING UP OF ALL OPERATIONAL PROCESSES
- INCREASED STAFF PRODUCTIVITY THROUGH REDUCED STAFF WORKLOADS
- ACCURATE AND QUALITY INFORMATION AVAILABLE TO ALL USERS
- INCREASED EFFICIENCY VIA EDI, CUSTOMER ACCESS AND THE INTERNET
- AN EASY TO USE SYSTEM THAT REQUIRES MINIMAL TRAINING
- A SYSTEM THAT CAN GROW AS YOUR ORGANISATION GROWS
- COMPLETE CONTROL AT YOUR FINGERTIPS

UNITRACK-R offers your operation a host of benefits, including:

- All the necessary features to manage containers within a railhead facility
- Cost reductions through a modular solution tailored to your exact needs
- All informational needs of operational and administrative staff
- Speeding up of all operational processes
- Increased staff productivity through reduced staff workloads
- Improvements in the quality and accuracy of information available
- Increased efficiency via EDI, customer access and Internet technology
- An easy to use system that requires minimal training
- A system that can grow as your organisation grow



Main menu

It is from here that all options are first selected.

File Maintenance	
1 :	Company File Maintenance
2 :	Customer File Maintenance
3 :	Hazard Code Maintenance
4 :	Size/Type Maintenance
5 :	Hold Code Maintenance
6 :	Repair Code Maintenance
7 :	Destination Maintenance
8 :	COMmodity Codes
9 :	ISO Codes
10 :	Non Stack Locations
11 :	Stack Location Maintenance
12 :	(T)us or (P)us Maintenance
13 :	Train Time Table
14 :	Calendar Bank Holidays
15 :	General Ledger Codes
16 :	Security Reports

File maintenance menu

Set up the table files for general control and the software.

Default Network - SBClient			
File Edit View Setup Transfer Utilities Script Help			
5 UNITRACK.R AD RailPort 24 JAN 2003			
Company File Maintenance			
System Title	UNITRACK.R		
Company Name	Any Company Ltd.		
Address	Any Railport Anywhere		
Depot	Any Depot		
Telephone Number	01234 56789		
Facsimile Number #1	01234 56789 ____	Facsimile #2	
Fax Regards Message			
Invoice Contact			
Vat Registration	1	Maximum Weight Wagon	60.00
Zero Vat Code	Z	Lanes 1/2	[BECBA
Default Vat %	17.50	Lanes 3/4	[BJ
Standard Vat	S	Stack Depth	IHGFEBCBAJ
Check Digit (A/M) ?	A	Modem Port	10

F2-Save F8-Bank Details F9-Default GL Codes

Company file maintenance

In here is where general parameters for control of the system are set and maintained.

Default Network - SBClient

File Edit View Setup Transfer Utilities Script Help

5 UNITRACK.R AD RailPort 24 JAN 2003

Customer File Maintenance

Customer ----- Customer Type

Name

Short Name

Address Invoice Address

Post Code Telephone

Fax Number Vat No

Transfer Requested T Days

Transfer Type Transfer Accept

Vat On Invoices Terms

F2-Save F5-Lift Charges F6-Charges Storage

Customer file maintenance

In here is where the details of the railport's customers are set up and maintained. In addition to the general information, rates for storage and lifts are set giving the system the flexibility to store separate charges for each customer.

Default Network - SBClient

File Edit View Setup Transfer Utilities Script Help

5 UNITRACK.R AD RailPort 24 JAN 2003

File Maintenance

1 : Company File Maintenance

2 : Customer File Maintenance

3 : Hazard Code Maintenance

4 : Size/Type Maintenance

5 : Hold Code Maintenance

6 : Repair Code Maintenance

7 : Destination Maintenance

8 : COmmodity Codes

9 : ISO Codes

10 : Non Stack Locations

Hazard Code Maintenance

Haz 0.0

Desc NON HAZARDOUS

Hazard Codes maintenance

Set up and maintain ISO hazard codes in this facility.

Size/Type Maintenance	
Size/Type	20DV
Description	20FT DRY VAN_____
Length	20.0
Width	8.0
Height	8.0
Type	C
TEU	1
Reefer	N
Iso Code	2200

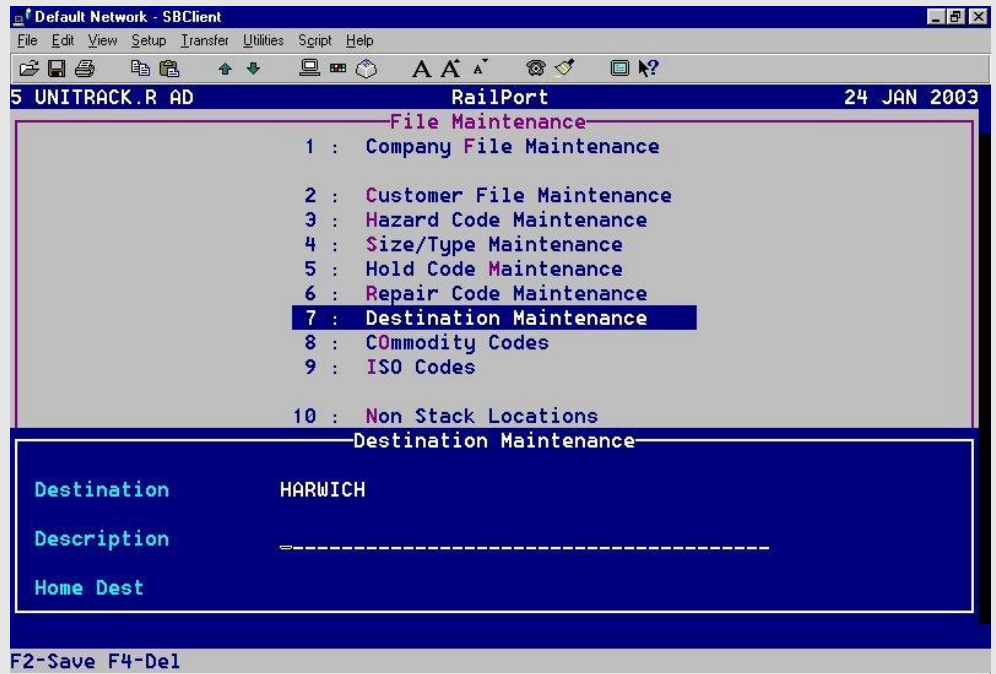
Size / Types maintenance

This option is used to set up the sizes and type codes for containers used within the system.

Repair Code Maintenance	
Repair Code	01
Description	STEAM CLEAN 20DV_____
Charge	10.00

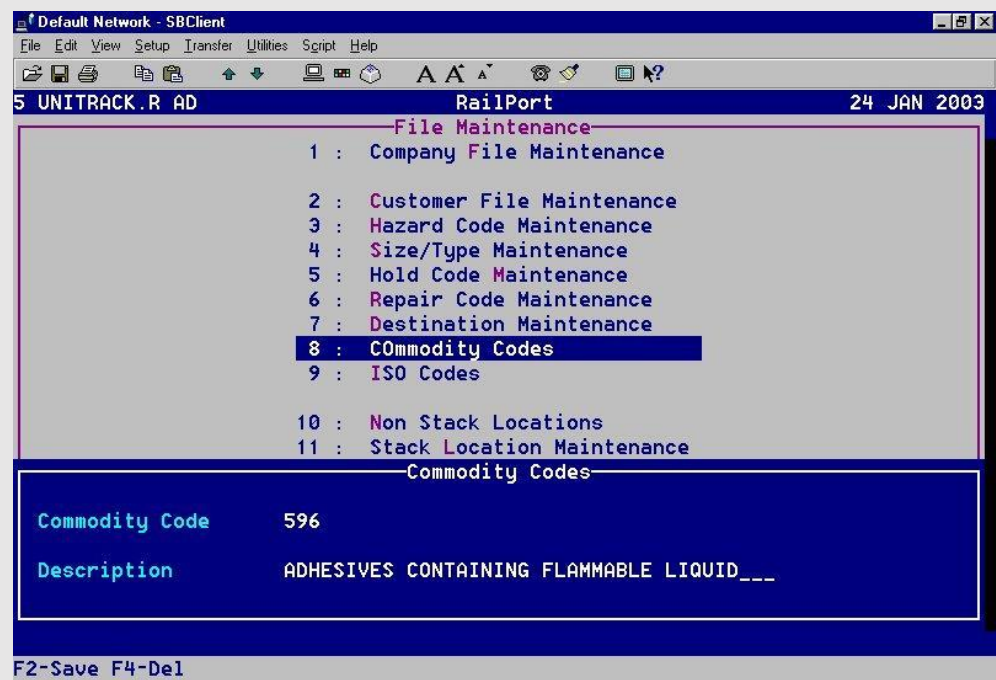
Repair Codes maintenance

This option is used to set up the repair codes to allow the production of repair invoices for customers with damaged containers.



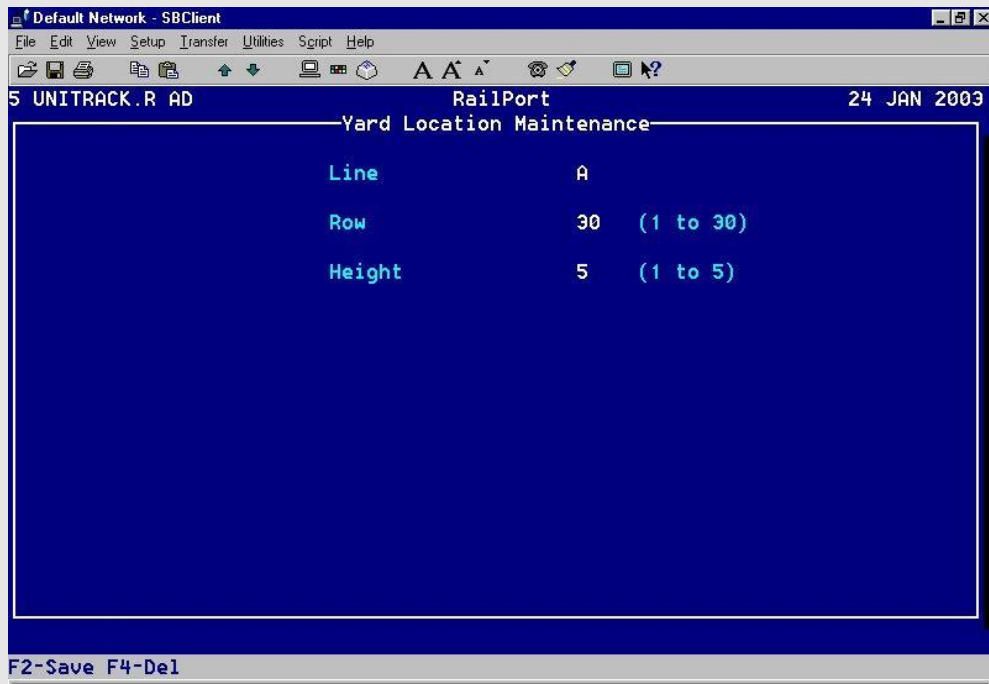
Destination maintenance

This option is used to set up the destinations and origins of trains



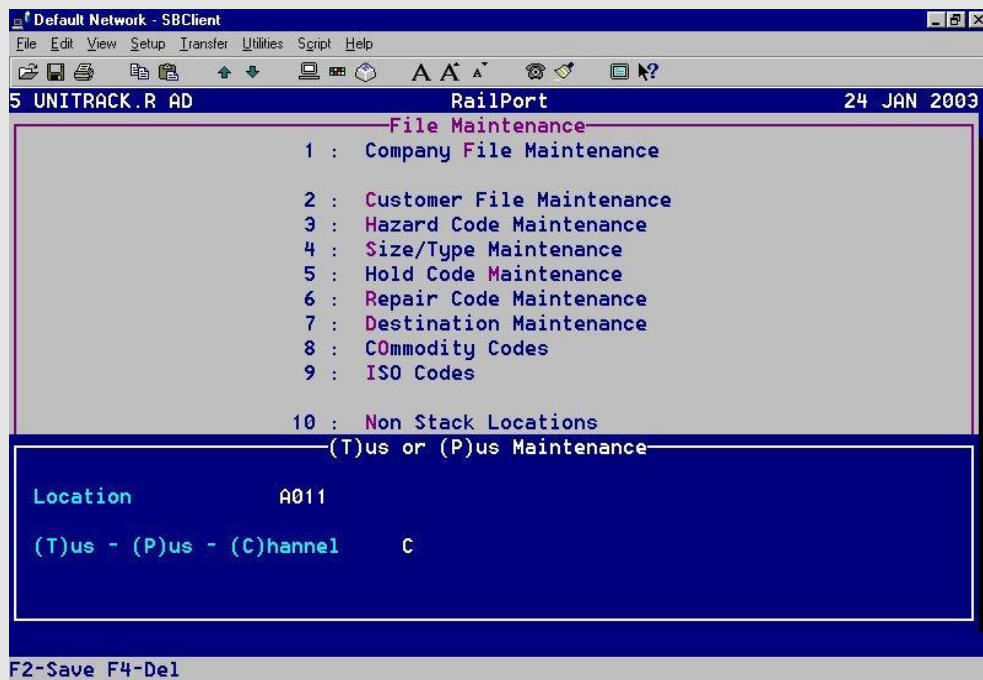
Commodity codes maintenance

This option is used to set up the commodities used to identify the contents of the containers.



Stack locations maintenance

This option is used to set up the locations relating to where containers are set with the stacks within the railport.



(T)Us or (P)us maintenance

This option is used to determine the nature of each location, (T)us, (P)us or (C)hannel.

TRAIN TIMES	
Code	4B08 Day _____
Time	Type
Destination	
Key	

Train Time Tables maintenance

This option is used to enter and maintain time tables for train coming to and going from the railport.

Breach Report User Activity Log Clear User Log File Group Summary Report User Report System Access Summary System Restrictions
User Summary Report User Details Report Group Summary Report Group Details Report Group Hierarchy Report

Security Reports

UNITRACK-R contains several security reports used to assess the activity within the system. Typically used for audit purposes.

Gate House	
1 :	Pre Book A Unit
2 :	Ingate Booking
3 :	Outgate Booking
4 :	Amend Booked In Units
5 :	Amend Booked Out Units
6 :	Enquire Units
7 :	Delete Unit
8 :	RDT Job Deletion
9 :	Amend Unit Number
10 :	Send Message to RDT
11 :	Vehicle Report
12 :	Outstanding Reference Report
13 :	OFFICE

Gate house menu

From this option features are accessed to management the arrival and departure of vehicles collecting and delivering containers to the railport.

Default Network - SBClient			
File Edit View Setup Transfer Utilities Script Help			
5 UNITRACK.R AD RailPort 24 JAN 2003			
pre book unit			
Reference	Haulier		
In Date			
Vehicle			
Agregator	-		
Operator	-		
Unit ID	Scode		
Size			
Com	Net Wght		
Haz	Gross Weight	Tare Weight	
Seal			
Headcode	Contract No		
Forward	Dest		
12 : Outstanding Reference Report			
13 : OFFICE			
F2-Save F4-Del F5-Book Out F6-Hazard Codes			

Pre-book unit

This feature is used to preload container information into the system for subsequent arrival into the railport and assign it to a train.

Default Network - SBClient

File Edit View Setup Transfer Utilities Script Help

5 UNITRACK.R AD RailPort 24 JAN 2003

Book In Vehicle

Vehicle	-----	Ref	Haulier	
In Date / Time	/	Out Date	/	
Container Delivery Details				
Customer			Operator	
Size	Unit	Customer Ref	Remarks	Com Haz L/E E/S R
Container Collection Details				
Unit	Size	Customer	Customer Ref	Remarks L/E
No Drop Unit	People In Cab		EIR (Y/N)	

F2-Save F5-Book Out F6-Hazard Codes F7-Check Pre Book F8-Check Unit F9-RDT

In gate Booking

This feature is used to book in a vehicle when it arrives at the railport to collect or deliver container(s).

RDT Job Deletion

Job No

Unit

From

To

Del Reason

Out gate Booking

This feature is used to book in a vehicle when it is ready to depart from the railport.

Send Message to RDT

User Code --- Name
Message

Message to RDT

This feature is used send messages to the Radio Data Terminals located in the stackers within the railport. The RDTs can be replaced with tablet computers to show the driver of the stacker which job he/she have to do.

RDT Job Deletion

Job No -----
Unit
From
To
Del Reason

Delete Job from RDT

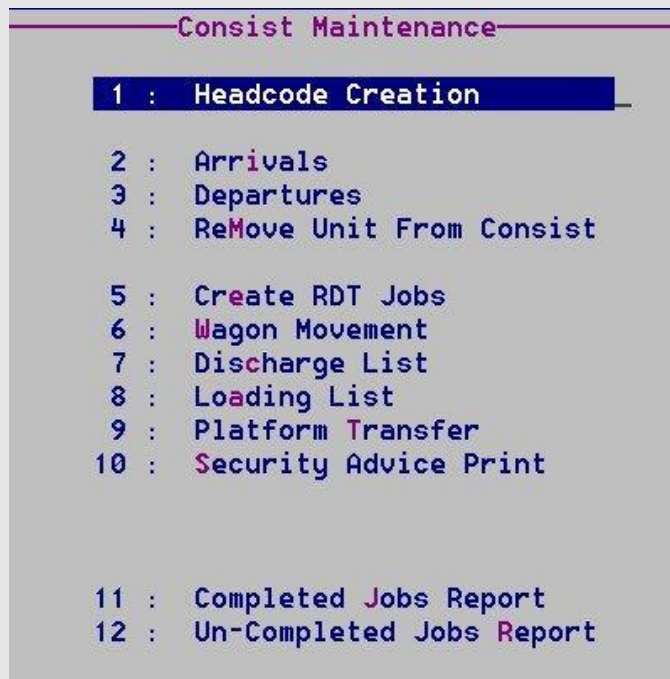
Use this feature to remove messages from the RDT is sent in error or the job has been cancelled.

ADVEHICLE Selection Criteria

In Date Above or Equal To =-----
And In Date Below or Equal To
And Vehicle Equal To
And In Client Equal To

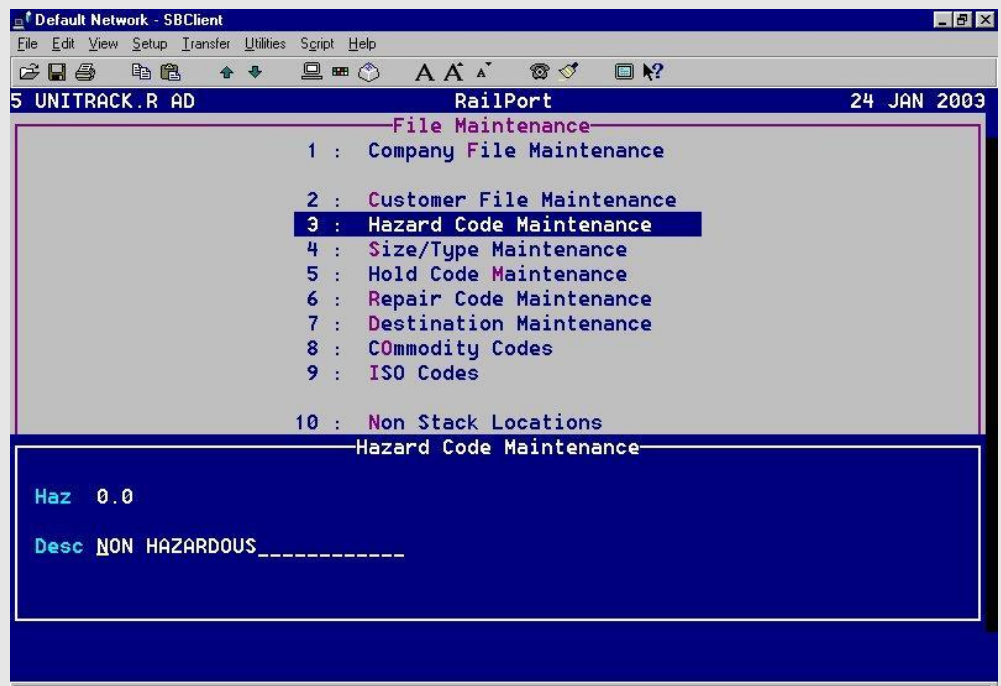
Vehicle report

Use this feature to produce a vehicle report showing how many vehicles arrived into the railport and how long each vehicle dwelled before leaving. This report is used to determine the efficiency of the port



Consist Menu

The features selectable from this menu allow the control of the train consist and inform the Unitrack system as to what containers are arriving or departing on each train.



Headcode Creation

This option allows the entry of the train headcode and the details pertaining to it. This record is then used throughout the rest of the consist menu as identification.

Default Network - SBClient

File Edit View Setup Transfer Utilities Script Help

5 UNITRACK.R AD RailPort 24 JAN 2003

Inward Consist

Headcode	Expected Date/Time	Contract
Unit Id	Size Type	Haz
Customer	Remarks	

F2-Save

Arrivals (inward consist)

This option allows the entry of the containers to be discharged from the train as it arrives.

Default Network - SBClient

File Edit View Setup Transfer Utilities Script Help

5 UNITRACK.R AD RailPort 24 JAN 2003

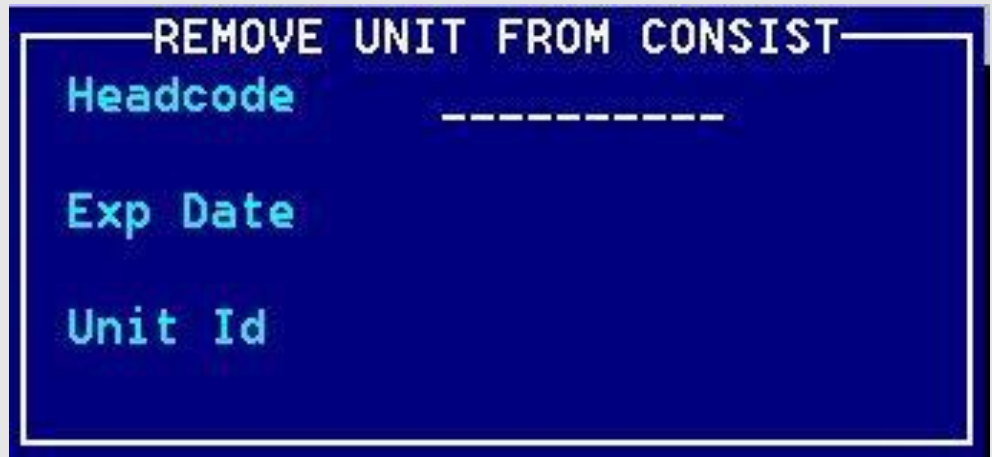
Outward Consist

Headcode	Expected Date/Time	Contract
Unit Id	Size	Customer
Wagon	Remarks	

F2-Save F5-Transfer

Departures (outward consist)

This option, similarly with the arrivals, allows the entry of the containers to be loaded onto the train, identified by the headcode, for departure.



```
REMOVE UNIT FROM CONSIST
Headcode      -----
Exp Date      -----
Unit Id       -----
```

Remove unit from consist

In the event of erroneous data entry, a container can be removed from a consist by utilising this option.



```
Job Creation
Headcode      -----
In Out        -----
Continue Y/N  -----
```

Create RDT job

This option will automatically create all the jobs necessary for the discharge and loading of containers from the train identified from the headcode.

Wagon Movement

Headcode

Expected Date

Expected Time

Unit Id

Weight

Wagon

New Wagon

Wagon movement

This option allows for adjustments to be made to the loading / discharge of containers when the units are on the wagons that do not correspond to the consist.

Default Network - SBClient
24 JAN 2003

5 UNITRACK.R AD
RailPort

Discharge List For Consist : 19/01/02 03:00					
Unit	Size	Wagon No	Customer	Agent	Customer Ref
CRXU2666268	20DV	608039	F/STOWE		0.0
CRXU2809501	20DV	93478	F/STOWE		0.0
CTIU3350105	20DV	608223	F/STOWE		0.0
GSTU2578375	20DV	608037	F/STOWE		0.0

Page 1 from Column 1+ - Cursor Scroll or Press <Enter> to Continue +

Discharge list

This report gives a list of containers to be discharged from a train identified by the consist number. The list includes the container numbers, sizes and types, and the wagon they are on.

Default Network - SBClient

File Edit View Setup Transfer Utilities Script Help

5 UNITRACK.R AD RailPort 24 JAN 2003

Loading List For Consist : 21/11/00 20:00

Unit	Size	Customer	Wagon	Customer Ref	HZ
IFFU3563704	30DV	IFF	TIPH93340 1	IFF	0.0
WABU5610933	20TT	F/LINER	TIPH93340 3	F/LINER	0.0

Page 1 from Column 1+ - Cursor Scroll or Press <Enter> to Continue +

Loading list

Similarly with the discharge list, this report gives information on the containers that are to be / or are already loaded onto a departing train identified by the consist number.

Default Network - SBClient

File Edit View Setup Transfer Utilities Script Help

5 UNITRACK.R AD RailPort 24 JAN 2003

Consist Maintenance

1 :	Headcode Creation
2 :	Arrivals
3 :	Departures
4 :	ReMove Unit From Consist
5 :	Create RDT Jobs
6 :	Wagon Movement
7 :	Discharge List
8 :	Loading List
9 :	Platform Transfer
10 :	Security Advice Print
11 :	Comple
12 :	Un-Comp

ADMANIFEST.OUT Selection Criteria

Headcode Equal To -----

And Expected Date Equal To -----

And Expected Time Equal To -----

F2-Accept

Security Advice

The security advice report shows details of the containers that are departing by train.

Default Network - SBClient

File Edit View Setup Transfer Utilities Script Help

Completed Jobs Report as at : 24 JAN 2003 14:26:56

Job No	Consist	From	To	Date	Time	UNIT	USER
044421	4A2SM CTL*	C061	7049381898	12/04/99	21:24	HPTL3013045	
041813	CLEARANCE*	I013		16/03/99	02:38	CNCK1460912	
041913	4A2SNOCTL*	T051	8749081511	16/03/99	20:14	SK5077	
041717	*	B041	K382BNH	15/03/99	09:38	000393064	SB
041146	*	I131	P970NB.J	08/03/99	14:21	000905056	SB

Page 1 from Column 1 - Cursor Scroll or Press <Enter> to Continue +

Completed jobs

The completed jobs reports details all job completed within a select time frame.

11 : Completed Jobs Report
 12 : Un-Completed Jobs Report

Un-completed jobs

The un-competed jobs reports simply details all job not completed within a select time frame.

Reports Menu	
1 :	Stock Report
2 :	Yard Report
3 :	Inward Movement Report
4 :	Outward Movement Report
5 :	Validate...
6 :	Stock Count
7 :	Vehicle Report
8 :	Long Stay Report
9 :	Report Of Deleted Units
10 :	Amended Unit Report
11 :	Deleted RDT Jobs
12 :	Report Of Vehicles Still In Depot
13 :	Commodity Analysis Report
14 :	Completed Jobs Report
15 :	Un-Completed Jobs Report
16 :	Vacant Slot Report
17 :	RDT Error Log

Reports Menu

Unitrack is supplied with a number of management reports. These reports can be added to or amended at anytime by simply contacting Ideal with your request.

Invoicing Menu	
1 :	PrE-Invoice Run
2 :	Pre-Invoice Schedule
3 :	InvOice Transfer
4 :	Invoice Storage
5 :	Invoice Train
6 :	Clear Down Work Files
7 :	Uninvoiced
8 :	Invoice Entry
9 :	Invoice Amendment
10 :	INvoice Print
11 :	InVoice Reprint
12 :	Credit Note Entry
13 :	Invoice Payments
14 :	Invoice Report

Invoicing Menu

Invoicing the various activities within the rail port is very simple and easy with Unitrack. A whole host of options to do this are available from this menu.

Radio Data Terminals

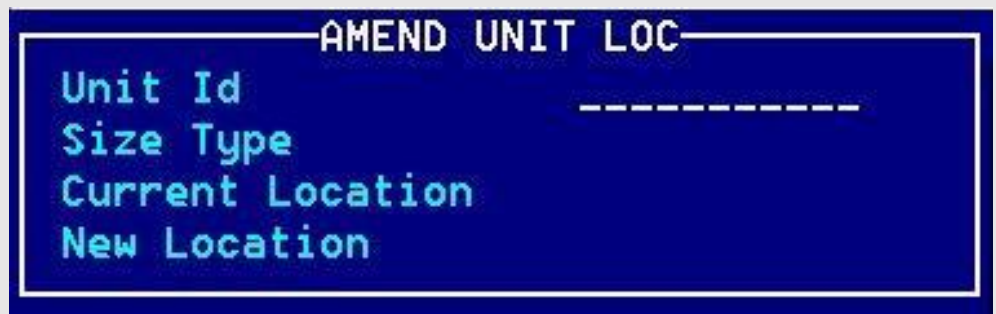
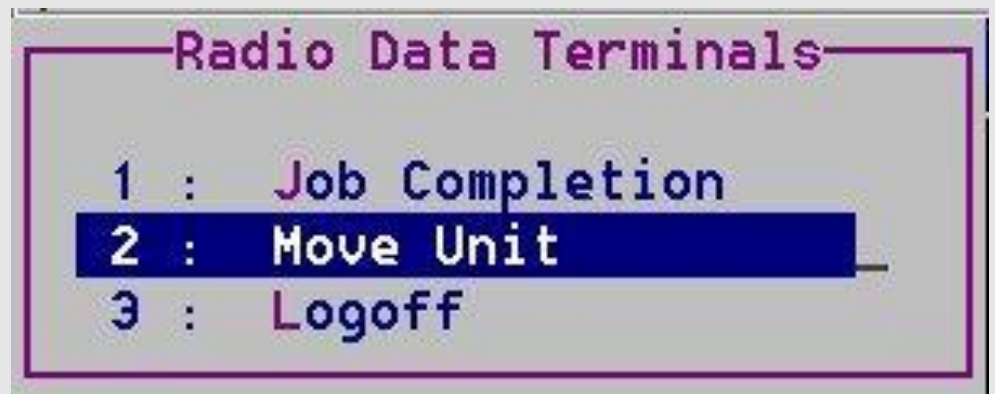
- 1 : Job Completion
- 2 : Move Unit
- 3 : Logoff

RDT Job Completion

		Type	VS
Unit	WSTU7765443	Size	40DV
From	G345RDF		
To	-----		
Complete (Y/N)		Wght	

RDT facilities – Job Completion

This option is used from the RDT itself and indicates to the Unitrack system that the given job has been completed. This example shows the movement of container number WSTU7765443 from the wagon G345RDF and is waiting for a stack position to be entered.



RDT facilities – Move Unit

This option is used from the RDT itself and indicates to the Unitrack system that container number entered has been moved from one location to the next.

For more information, please contact us

WACOS is copyrighted and supplied exclusively by Ideal Business Services Ltd.

UK and Europe

Ideal Business Services Ltd
Suite H & I
112 Market Street, Westhoughton
Bolton UK BL5 3AZ

Tel: +44 1942 209578

sales@idealbusinessservices.co.uk
support@idealbusinessservices.co.uk
www.idealbusinessservices.co.uk

Caribbean and the USA

Ideal Business Services Ltd
Beausejour
St Lucia
West Indies

Tel: +1 758 7214487

info@idealnet.co.lc
www.idealnet.co.lc